

COMMON OPEN SOURCE LICENSES

For Detailed Resources on All Open Source Licenses Go To:
 - Picking the Appropriate License: ChooseALicense.com
 - Detailed Information: TLDRLegal.com
 - Generally Accepted Licenses: OpenSource.org [80 Total]

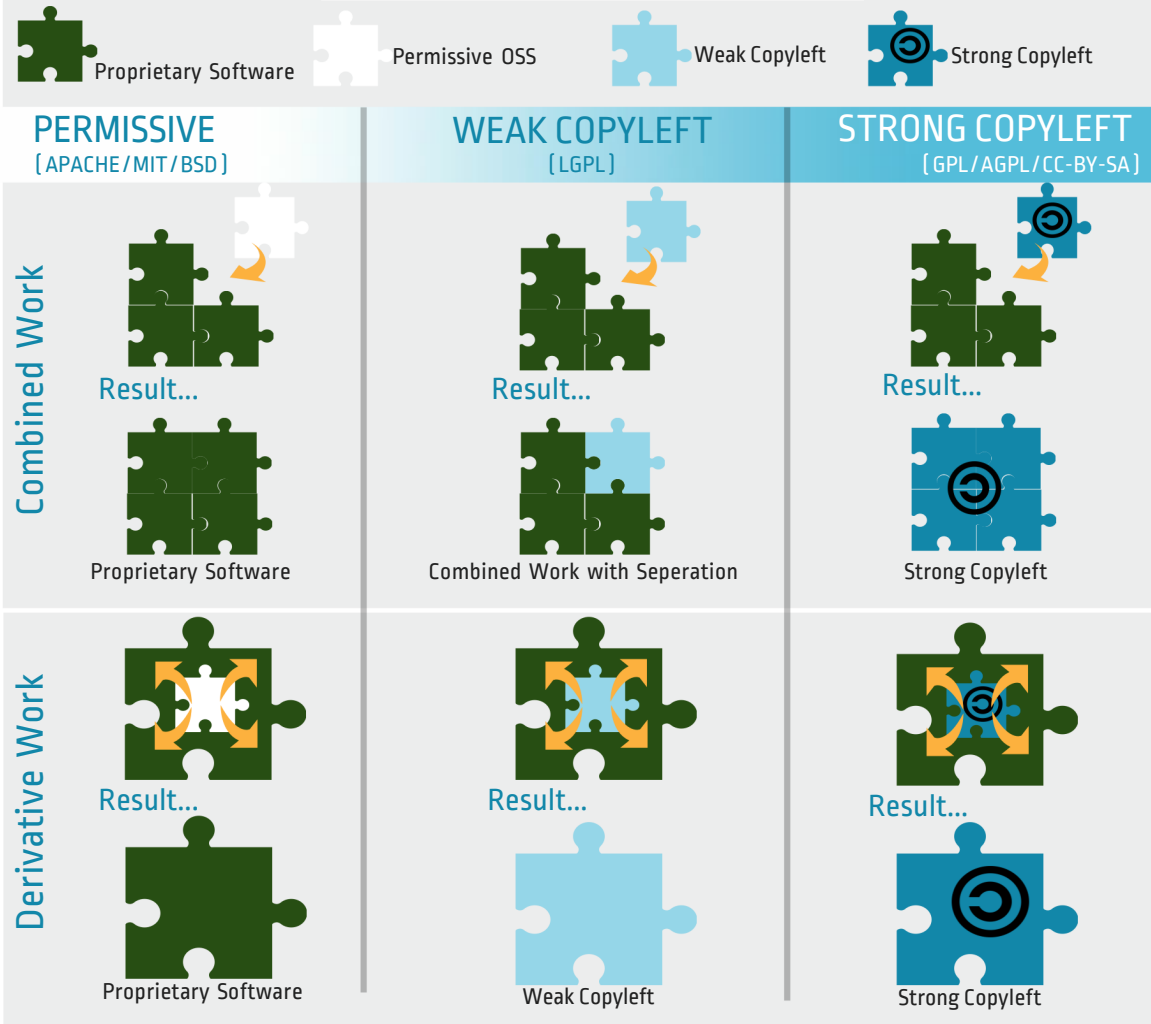
License	Can	Cannot	Must	Category
APACHE 2.0 13% of OSS	<ul style="list-style-type: none"> Commercial Use Modify Distribute Sublicense Private Use Use Patent Claims Place Warranty 	<ul style="list-style-type: none"> Hold Liable Use Trademark 	<ul style="list-style-type: none"> Include Copyright Include License State Changes Include Notice 	Most Permissive
MIT 38% of OSS	<ul style="list-style-type: none"> Commercial Use Modify Distribute Sublicense Private Use 	<ul style="list-style-type: none"> Hold Liable 	<ul style="list-style-type: none"> Include Copyright Include License 	Acceptable Permissive License
BSD 5% of OSS	<ul style="list-style-type: none"> Commercial Use Modify Distribute Place Warranty 	<ul style="list-style-type: none"> Use Trademark Hold Liable 	<ul style="list-style-type: none"> Include Copyright Include License 	
LGPL 3.0 v3.0: 1% of OSS v2.1 3% of OSS	<ul style="list-style-type: none"> Commercial Use Modify Distribute Place Warranty Use Patent Claims 	<ul style="list-style-type: none"> Sublicense Hold Liable 	<ul style="list-style-type: none"> Include Original State Changes Disclose Source Include License Include Copyright Include Install Instructions 	Weak Copyleft
GPL v3.0 v3.0: 9% of OSS v2.0: 14% of OSS	<ul style="list-style-type: none"> Commercial Use Modify Distribute Place Warranty Use Patent Claims 	<ul style="list-style-type: none"> Sublicense Hold Liable 	<ul style="list-style-type: none"> Include Original State Changes Disclose Source Include License Include Copyright Include Install Instructions 	Strong Copyleft
AGPL v3.0 <1% of OSS	<ul style="list-style-type: none"> Commercial Use Modify Distribute Place Warranty 	<ul style="list-style-type: none"> Sublicense Hold Liable 	<ul style="list-style-type: none"> Include Copyright Include License State Changes Disclose Source Include Install Instructions 	Strong Copyleft
CREATIVE COMMONS NONCOMMERCIAL SHARE-A-LIKE <1% of OSS	<ul style="list-style-type: none"> Distribute Modify Rename 	<ul style="list-style-type: none"> Commercial Use Sublicense Place Warranty Hold Liable 	<ul style="list-style-type: none"> Give Credit Include Copyright State Changes 	Strong Copyleft

Note: GPLv2.0 does not have "Use Patent Claims" Language

Note: AGPL is written specifically to require disclosure of source with web publication; a loophole in GPL.

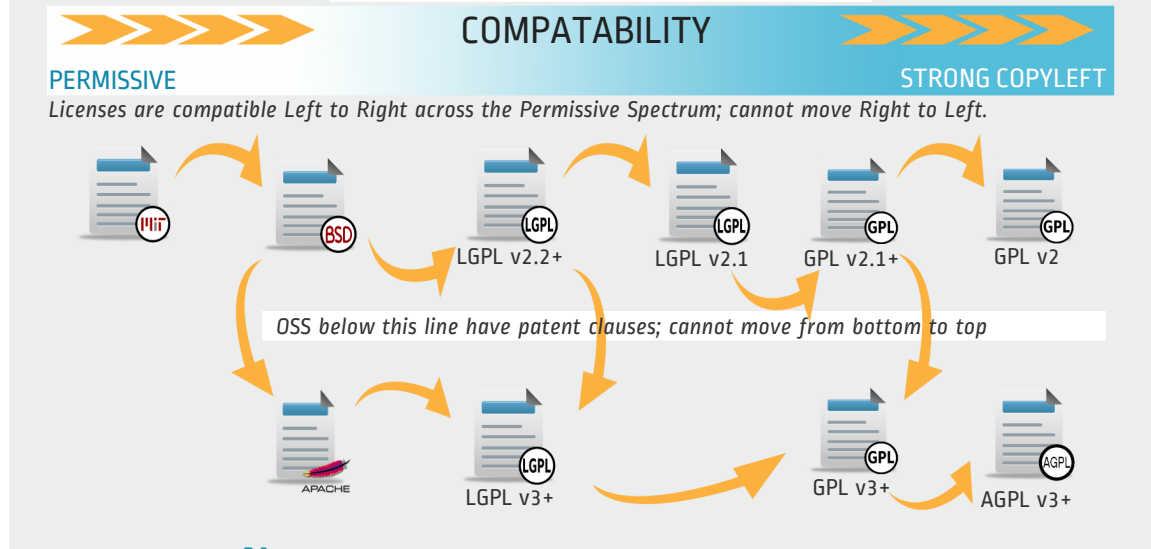
Can/Cannot/Must Images from tlrdLegal.com and are licensed under Creative Commons Attribution 3.0 ["CC-BY"]
 OSS Usage Statistics : www.blackducksoftware.com/top-open-source-licenses
 © Designates Copyleft Licenses

MERGING OSS AND PROPRIETARY SOFTWARE



Note: All OSS can interact with proprietary software as long as there is significant separation between the two software components.

LICENSE COMPATABILITY



Note: GPL & LGPL are ordered correctly in the chart above. Licenses became forward compatible in GPL v2.1 and LGPL v2.2.

When NOT to Open Source!

Patented Software:
 At UMN we are unlikely to release patented software open source. This is primarily because we see a patent as an investment in the power to exclude, open sourcing counters that investment.

GPL v3.0 & Apache v2.0:
 GPL v3.0 & Apache v2.0 now have a patent clause that provides a royalty free, non-exclusive patent license to the licensee if contributed source infringes.